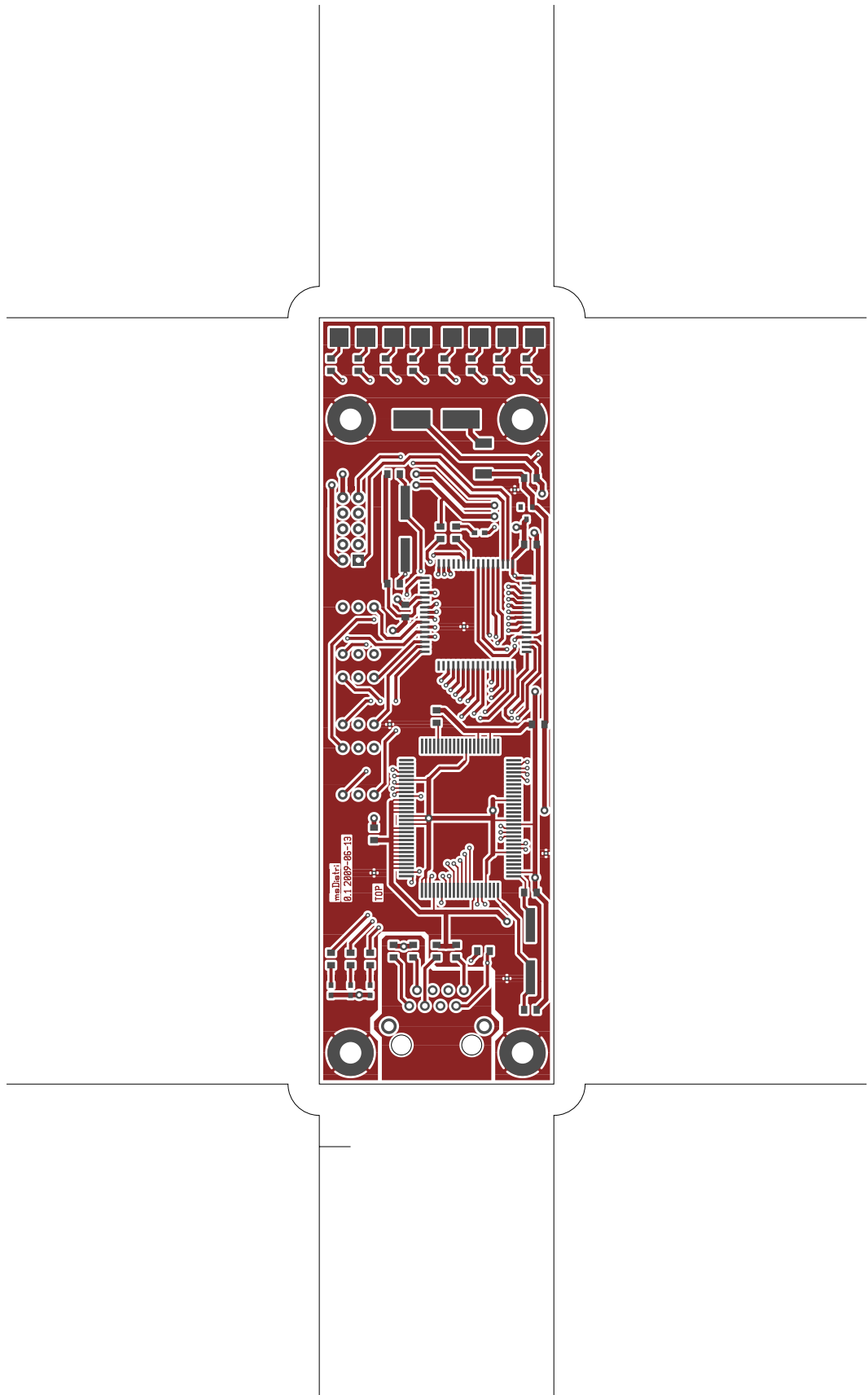
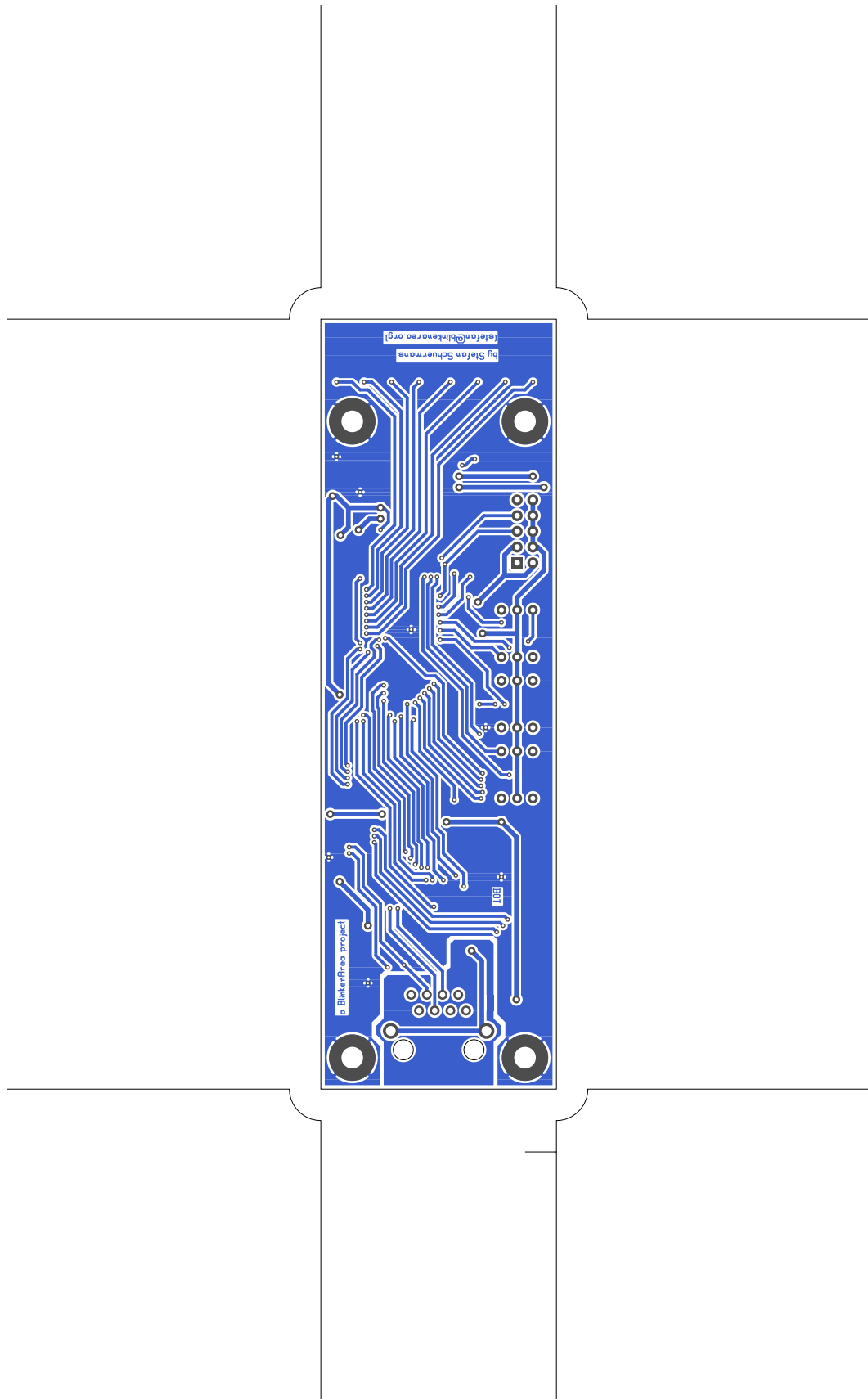
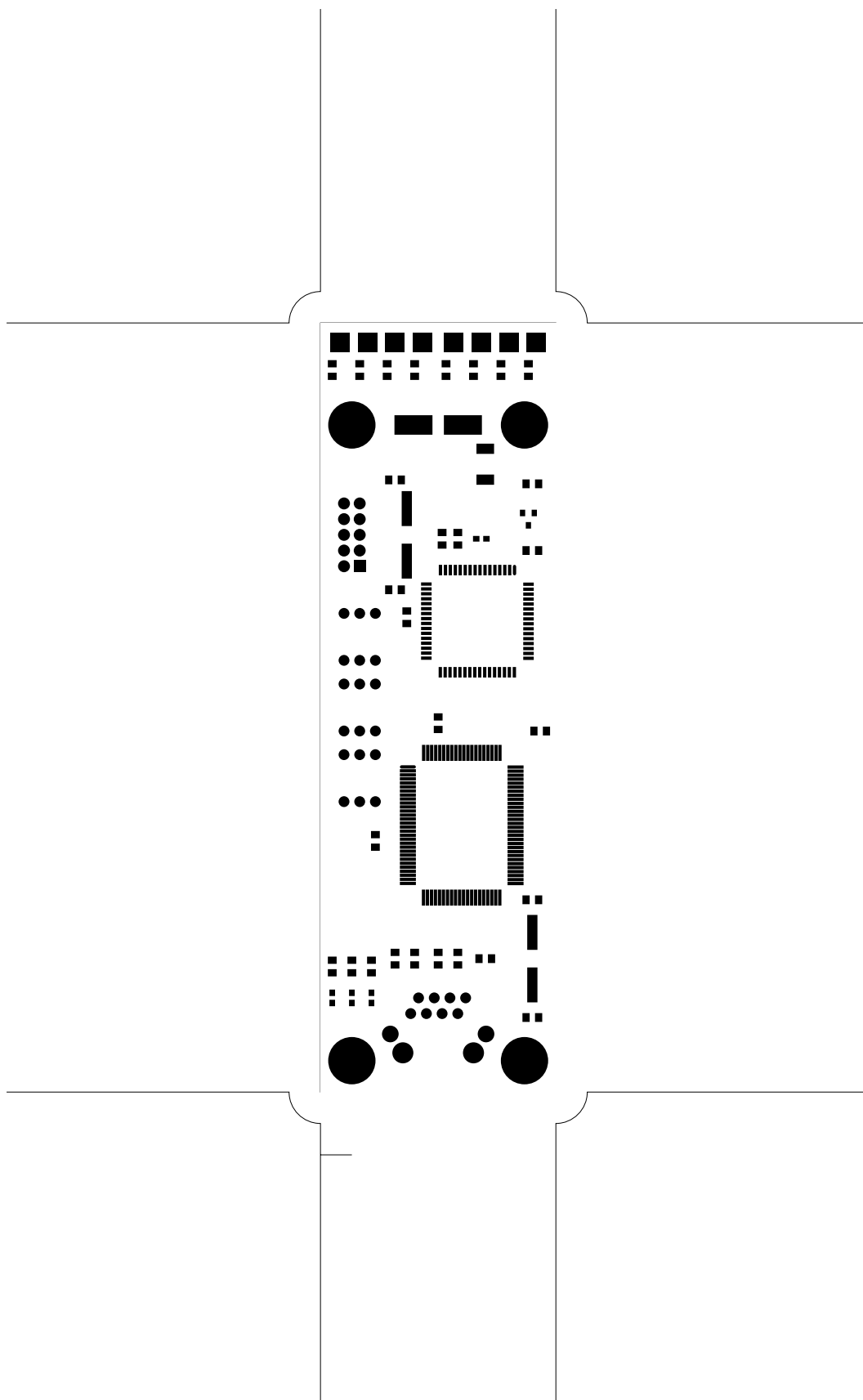
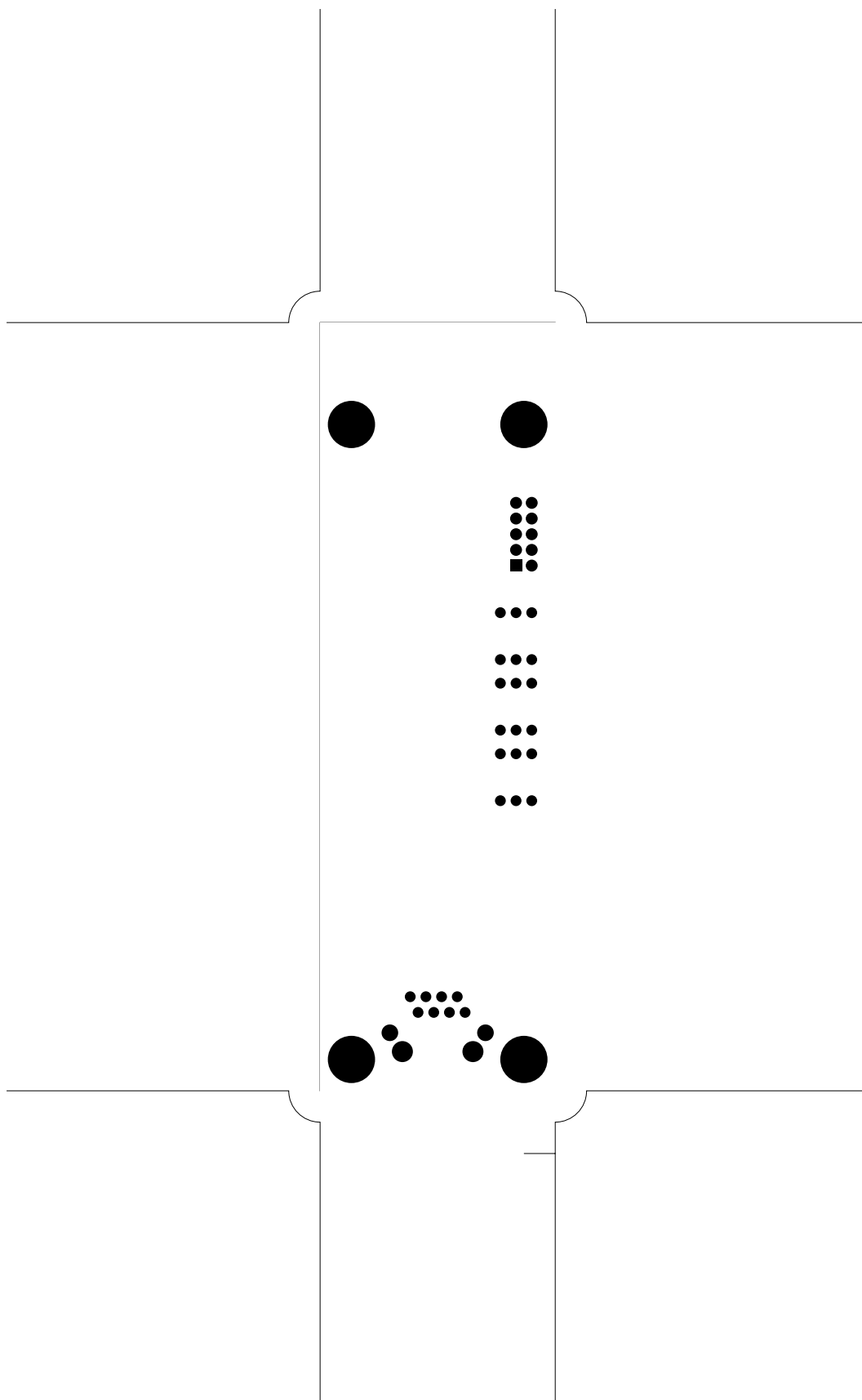


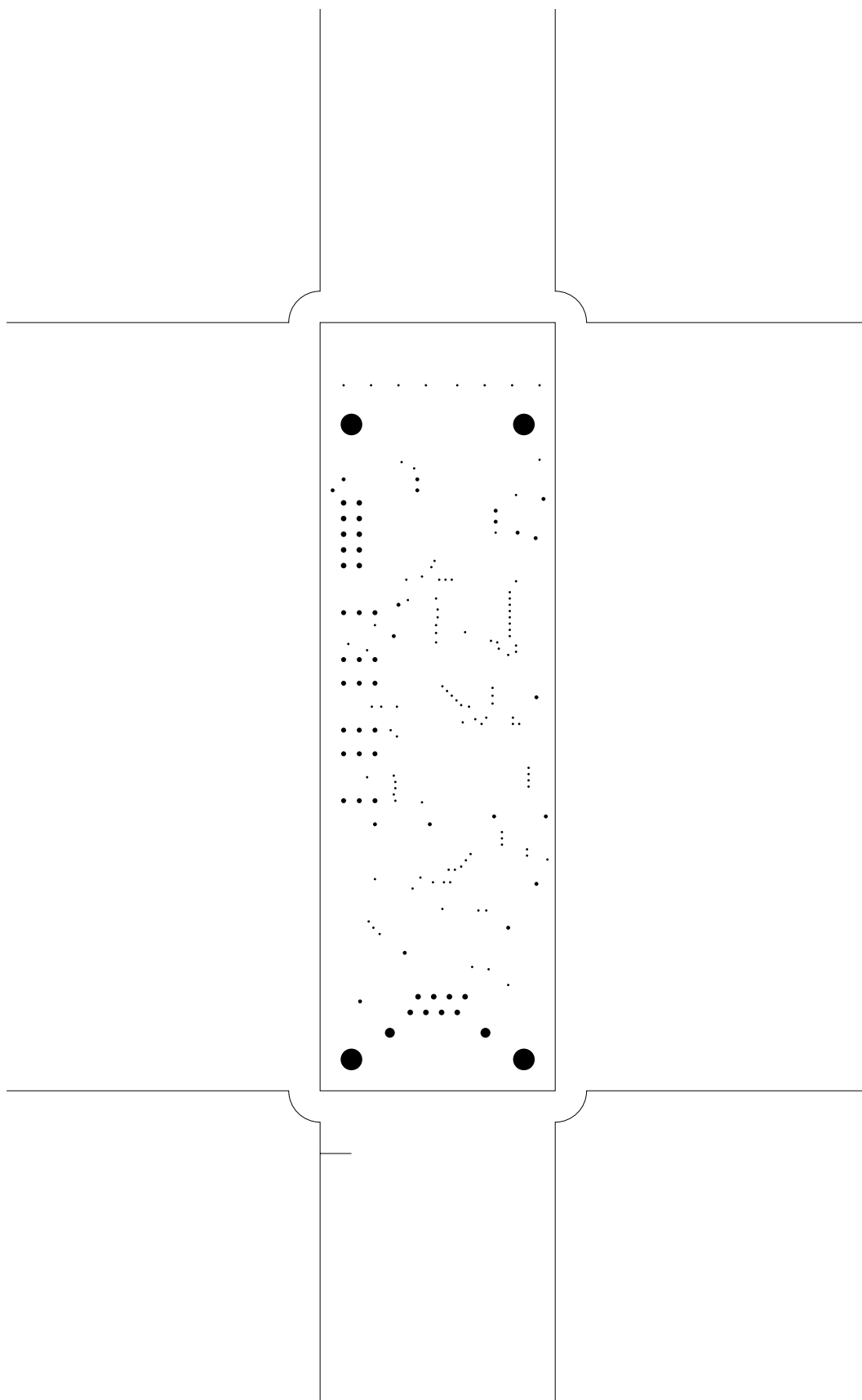
2. component
3. solder
4. componentmask
5. soldermask
6. plated-drill
7. unplated-drill
8. topsilk
9. bottomsilk
10. toppaste
11. topassembly
12. bottomassembly
13. fab

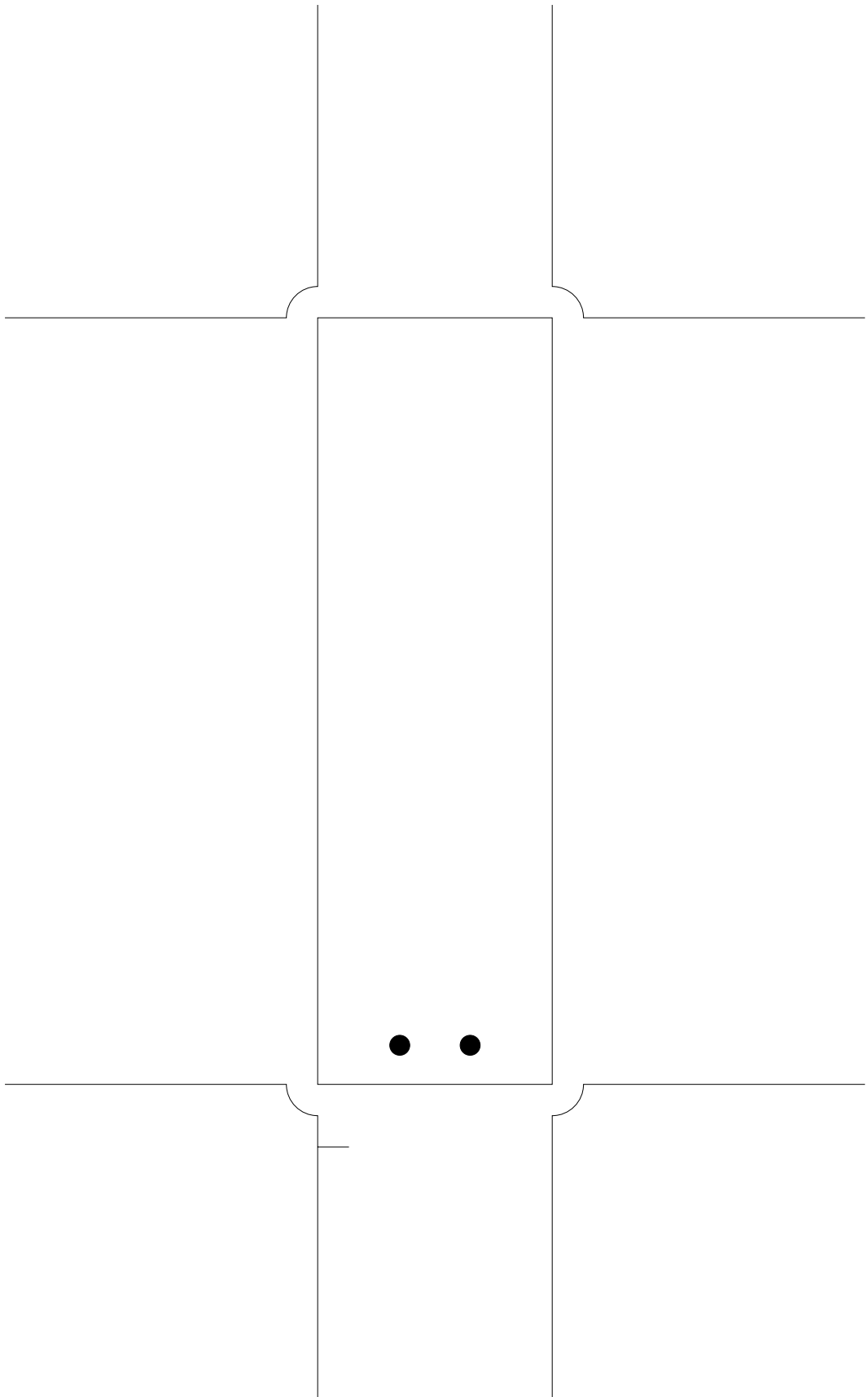


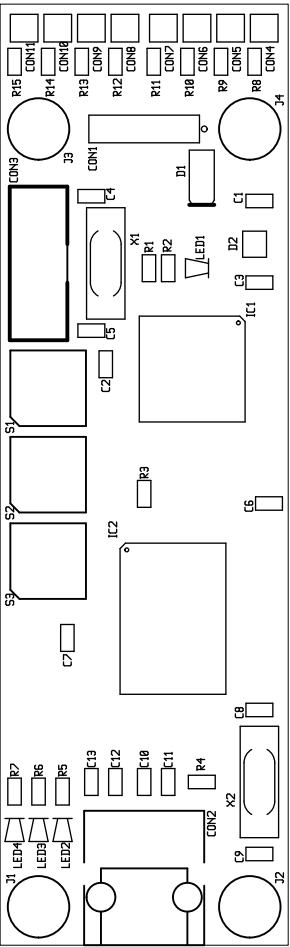


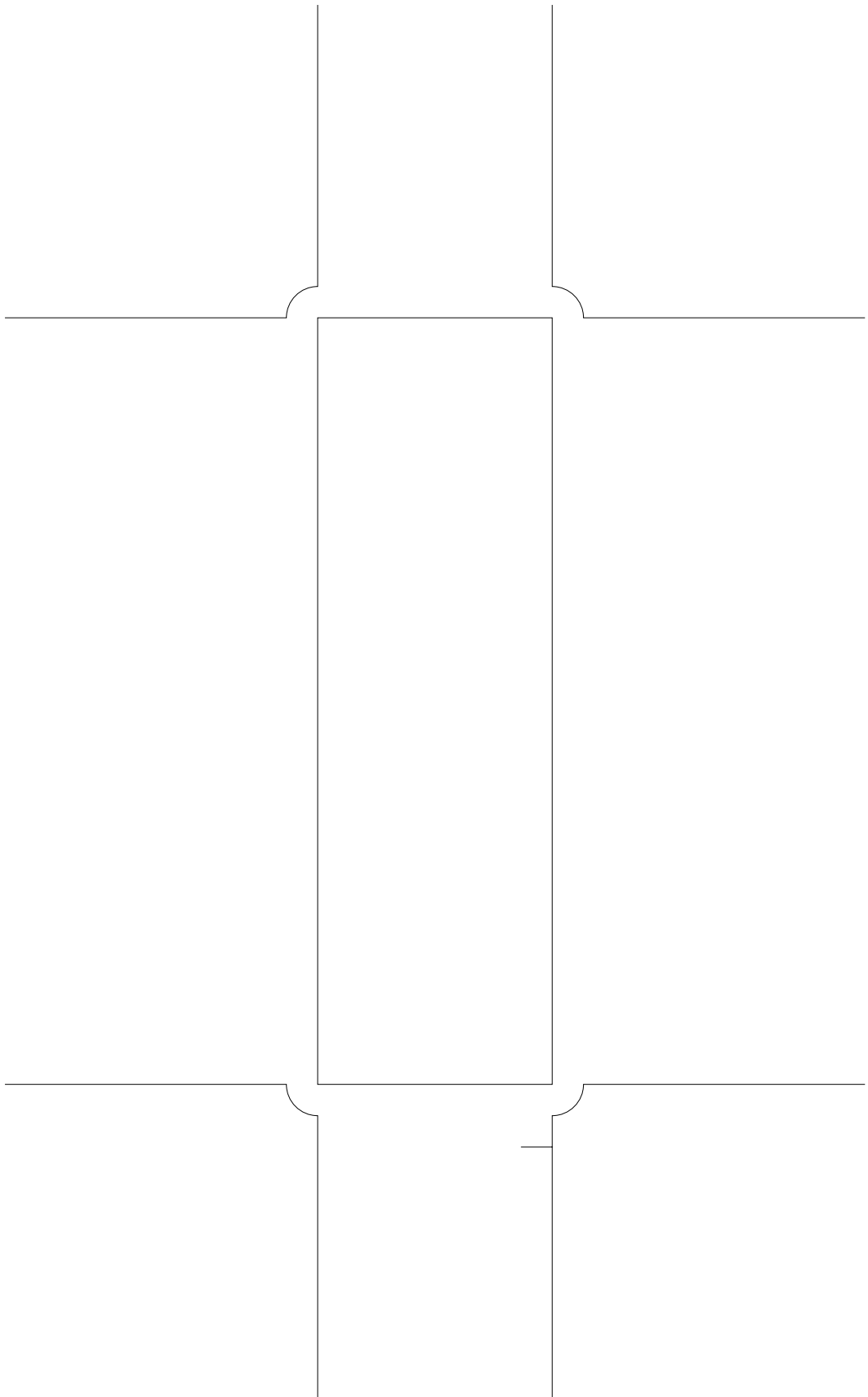


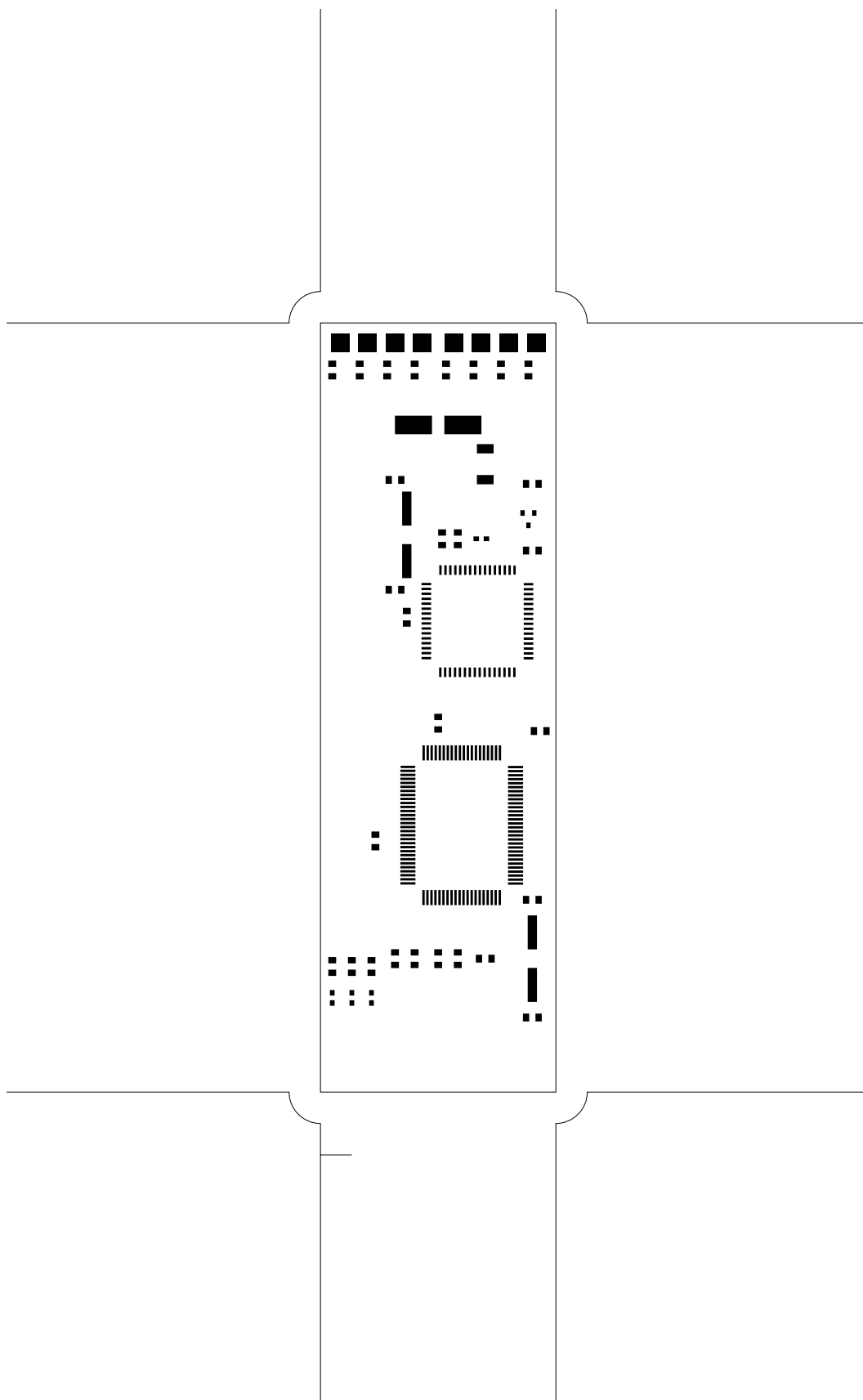


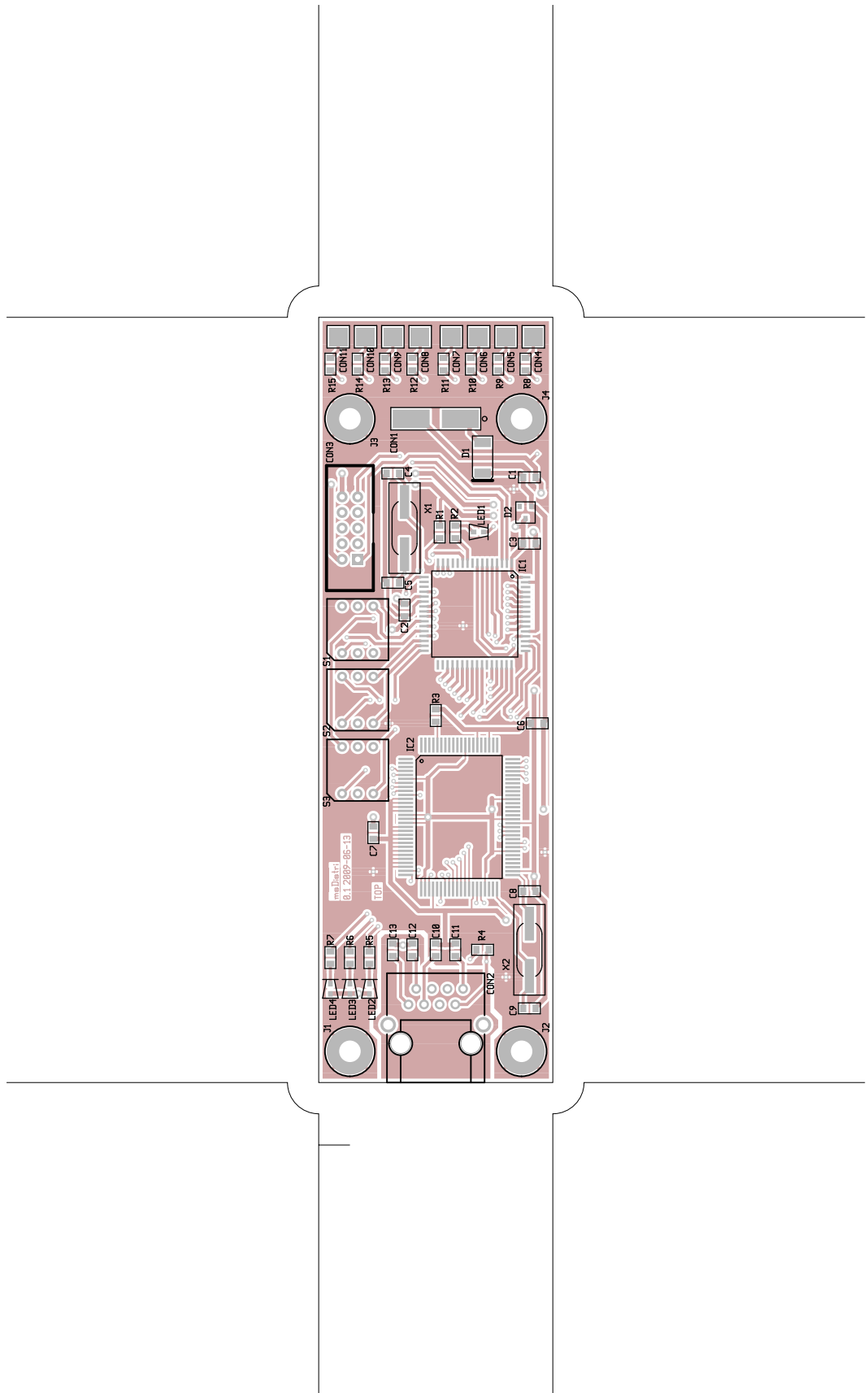




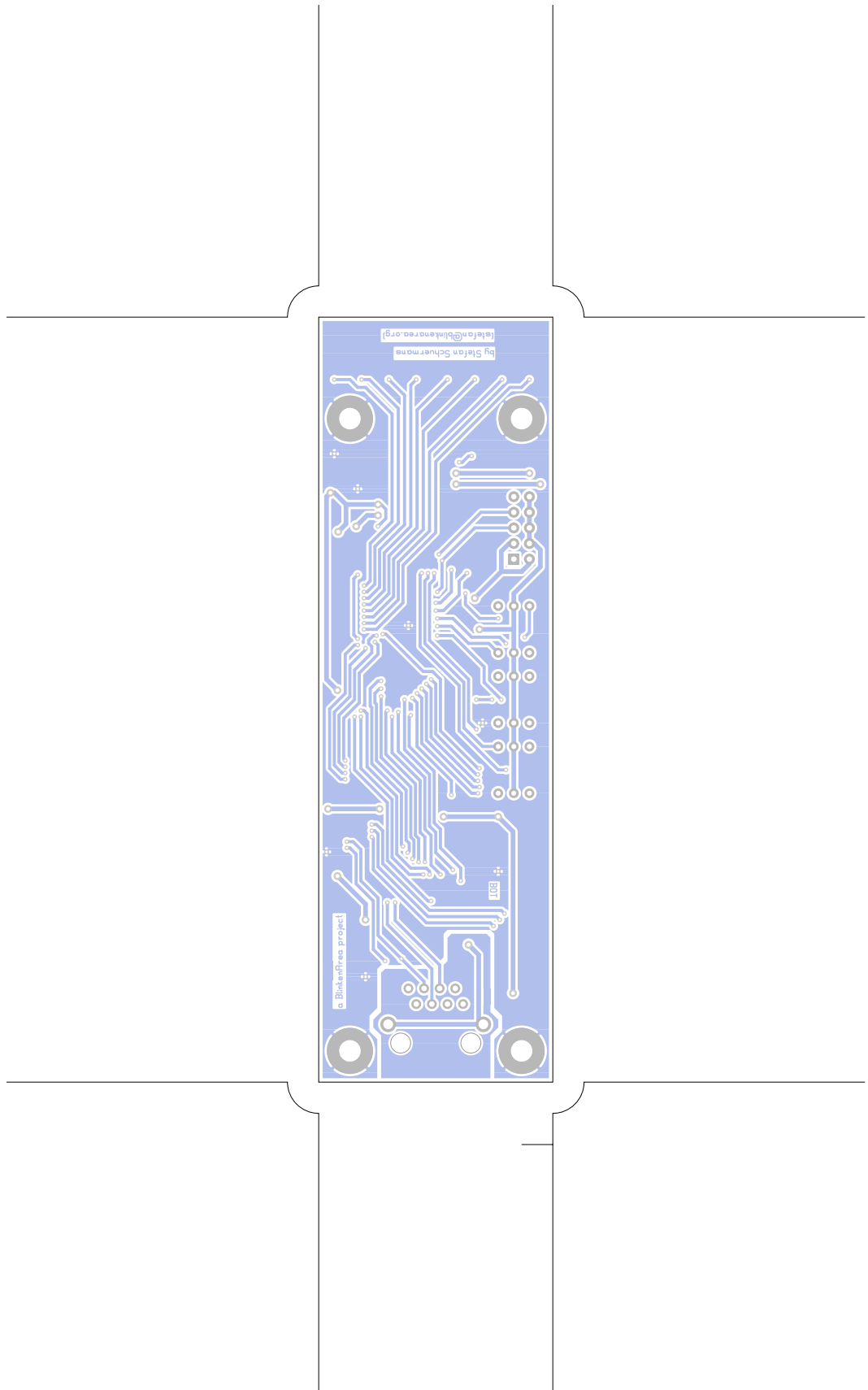








flpDistri, frontassembly, scale = 1:1.000
msDistri.pcb

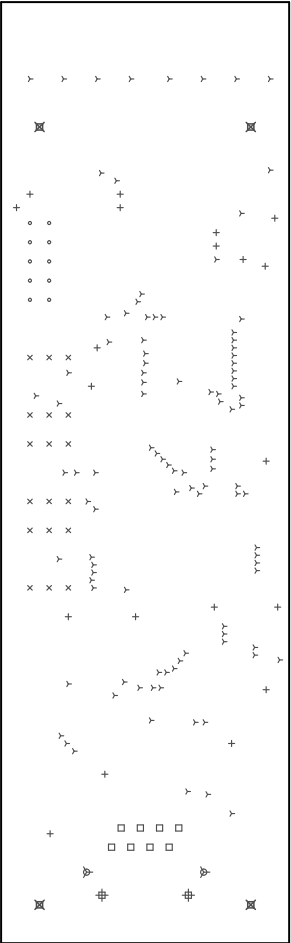


flpDistri, backassembly (mirrored), scale = 1:1.000
msDistri.pcb

There are 8 different drill sizes used in this layout, 168 holes total

| Symbol | Diam. (Inch) | Count | Plated? |
|--------|--------------|-------|---------|
| Y | 0.015 | 104 | YES |
| + | 0.025 | 20 | YES |
| x | 0.032 | 10 | YES |
| o | 0.035 | 10 | YES |
| □ | 0.036 | 8 | YES |
| ▽ | 0.063 | 2 | YES |
| ⊕ | 0.128 | 2 | NO |
| ⊗ | 0.138 | 4 | YES |

Title: flpDistri - Fabrication Drawing
Author: Stefan Schuermans
Date: Sun Jun 14 11:37:35 2009 UTC
Maximum Dimensions: 4900 mils wide, 1500 mils high



Board outline is the centerline of this 10 mil rectangle - 0.0 to 4900.1500 mils